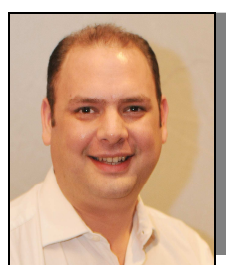


Mark Bonnar (Chartis)

Mark has over 30 years of experience in the insurance industry as both an underwriter & broker in London, Australia & Singapore. Mark started his career in 1982 as a Liability broker in the London market with C.T. Bowring/Marsh before moving to Australia in 1985. After 11 years in Australia as both a broker and latterly an international insurance & reinsurance underwriting manager Mark returned to London. In 2000 Mark relocated back to Sydney with Dexta underwriting agency, in addition to being a member of the NSW Government Consultative Panel on Home Building & Insurance.

Mark moved to Singapore in 2003 to take the position of Asian Casualty Practice Leader at Marsh. In 2006, he joined ACE as the Asia Pacific Casualty Energy Manager to grow an Asia Pacific regional Liability portfolio of oil & gas, mining, power & utility, petrochemical & Energy contractors risks. Mark joined Chartis in October 2010 where he is currently Vice President, Energy & Construction Casualty, Asia Pacific in Singapore.



Paul Young, (Aon Risk Solutions)

Paul is a Regional Managing Director of Aon Asia and is joint head of Aon's Energy & Mining practice in Asia. He joined Aon's regional team in October 2005, and now has responsibility for client service delivery and business development for Aon's clients in the oil, gas, petrochemical and mining sectors.

Paul has sixteen years insurance experience, and has been based in the Asia-Pacific region for nine years, including six years in Hong Kong. Paul is a Senior Associate of the Australian and New Zealand Institute of Insurance and Finance (ANZIIF (Snr Assoc) CIP) and holds a Diploma in Insurance (Dip CII) from the Chartered Insurance Institute.



Julian Taylor (Miller)

Julian Taylor started his career in insurance at Lowndes Lambert in 1979 before joining the energy team at Miller in 1981 and subsequently becoming Head of Energy in 1999. He was appointed a Board Director in 2004 and Head of Asia in 2011 with responsibility for developing all lines of business in Asia and 4 Miller offices in the region. Although his responsibilities now involve a broad range of insurance products, Julian spent many years as a producing broker specialising in upstream energy property and liability business and helping Miller grow its upstream business across a broad geographical reach.

Miller has been a long term participant in the Asian insurance and reinsurance scene and in recent years has invested in a growing number of employees and offices in the region thereby underlining its commitment to this vitally important market.



Iain Anderson (Ince & Co.)

Iain started in the insurance market as a marine hull adjuster before joining Ince & Co as a trainee in 1998. As a young lawyer, Iain worked in both Greece and then London with the Company, becoming a partner in the global insurance team in 2007. In 2010, Iain re-located to Singapore where he heads up Ince & Co's Asia insurance and reinsurance team.

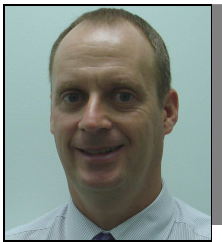
Iain's focus lies in insurance and reinsurance work, in particular the marine & energy sectors. In the offshore energy sector, Iain regularly advises on claims-handling, product development as well as on recovery issues which arise across the range of offshore energy covers – including construction, operational, business interruption and liability risks. Iain also assists insurers and policy-holders with their casualty responses and is profiled in the major directories.



Simon Sloane (Reed Smith)

Simon is a partner in a leading international law firm and has been based in Singapore since 2006, specialising in large, complex, cross-border dispute resolution with particular experience in CAR and PD/BI claims in the mining and offshore energy sectors.

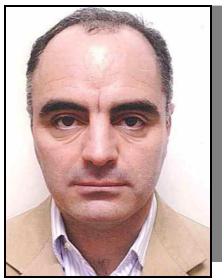
With over 20 years experience in the industry Simon has acted for multi-national insureds, insurers, intermediaries and reinsurers, gaining direct experience of working within the insurance industry as in-house counsel in both the US and the UK. Simon is recommended as a leading individual in the Insurance and the Dispute Resolution sectors in the major directories.



Jon Sykes (Dr J H Burgoyne & Partners (International) Ltd)

Dr. Jon Sykes is the Resident Director of the Singapore office of Dr JH Burgoyne & Partners (Int'l) Ltd, a firm of forensic scientists and engineers. Jon's area of expertise is the investigation of metallurgical and engineering incidents.

John has investigated the cause of many metallurgical failures that have occurred in oil and gas facilities, including numerous pipeline failures. Jon is a Chartered Engineer and holds a degree in Materials Science and a PhD in Corrosion Science and Engineering. He has been based in Singapore since 2001.



Giorgio Martelli (Saipem)

Giorgio Martelli graduated in Mechanical Engineering and Naval Architecture at the University of Trieste, Italy, and after a period in the Italian Navy as an Officer, he joined first Micoperi and then Saipem.

His career started with design engineering before moving into offshore field engineering and project management on various construction projects for the Oil and Gas industry.

Giorgio has held various positions in the engineering, operations and commercial departments within the Saipem Group in Italy, U.K., Norway, Malaysia, Indonesia, U.S.A., and Brazil and was particularly involved in deep-water and remote technology aspects of the industry. While in Brazil he served as the local chapter Chairman for IMCA (International Marine Contractor Association). In his current post as Country Manager for Australia, Giorgio is in charge of all activities of the Saipem Group in the Australian continent, including large Offshore Construction (EPCI) projects.



Gary Mawditt (MatDan)

Gary left University with a degree in Geology to take up a position working as a mudlogger. This involved working on mobile offshore drilling units during the drilling of exploration and development wells in the southern North Sea, and his role included the detection of formation tops through geological sampling, and the monitoring of drilling parameters for the early detection of drilling problems and kick situations.

After taking a break to complete a one year Masters degree at Camborne School of Mines, Gary returned to mud-logging, working on-shore in Venezuela and offshore the Netherlands, UK and Norway. In 1999, Gary made the transition to the insurance world, and joined Matthews Daniel in London. After taking a secondment in Calgary from 2001 to 2002, he returned to the London office and was made Operations Director in 2005. Whilst he handles a wide range of claims, he specialises in well control and drilling-related claims, and has handled a number of high profile losses in North Africa, West Africa and Norway.



Robert Benzan (Husky Energy)

Roberto has 24 years of insurance and risk management related experience with the past 14 years with Husky. Roberto currently heads the Corporate Risk Management Group in Calgary, where he is responsible for directing all insurance related and enterprise risk functions. Husky Energy is a Canadian-based integrated energy and energy-related company headquartered in Calgary, Alberta, and ranks among Canada's largest petroleum companies in terms of production and the value of its asset base, with operations located throughout onshore Western Canada as well as offshore Atlantic Canada, USA, China and Indonesia.

Prior to joining Husky, Roberto, worked at Commonwealth Insurance Company in Vancouver where he was primarily responsible for the Offshore Energy and Control of Well claims portfolio, as well as part of the team that developed their Energy related policy wordings.

Roberto is a director of Oil Insurance Limited (OIL), where he also serves on the Governance Committee. In the past he has served as a director on industry related associations, including participating on the board of the Southern Alberta Risk & Insurance Management Society and the B.C. Insurance Adjusters Association where he served as President.



John Reid (CTA)

John graduated from Aberdeen University 1977 with a BSc Hons degree in Mechanical Engineering. During a 26 year career as an Engineer and Projects Manager in the offshore Oil and Gas E & P industry, he was involved on several major development projects worldwide, specialising in well engineering, subsea and floating production systems including deep water drilling and production technologies.

Since joining CTA in 2003 John has gained experience in offshore oil and gas energy insurance claims on all five continents involving property damage, construction, business interruption and OEE / control of well claims. His specialist areas are wells, subsea production system and FPSO claims. His experience includes 2004, 2005 and 2008 GOM hurricane losses, the current Gryphon FPSO loss and multiple diverse OEE losses.



John Donald (CTA)

Having qualified as a mechanical engineer at British Steel and moving on to engineering projects on UK based Refinery's; John entered the Loss Adjusting profession based initially in the Middle East.

In 1991 John was relocated to London gaining experience in upstream and downstream on and offshore property damage, construction risks, DSU and Business Interruption losses. Additionally he gained experience in Risk Assessment in the On and Offshore sector along with Power stations and general Utilities, all on a worldwide basis.

During his career John has been involved in numerous hurricane related claims adjustments both in respect of PD and BI elements.



Simon Johnson (Aon)

Dr Simon Johnson is a Director of Aon's Environmental Services Group and responsible for business across UK and EMEA.

An engineer, Dr Johnson has a PhD in Rock Mechanics and worked at the forefront of offshore fracking of oil reserves for BP Research. A former Technical and Underwriting Director of Certa UK, he has also over 20-years' experience managing and insuring environmental liabilities and has advised and represented a wide range of public and private institutions and government bodies in the UK and overseas.



Pradeep Sinha (Larsen & Toubro)

Pradeep is a post-graduate from Jawaharlal Nehru University, New Delhi. Following graduation, in 1981, he joined leading local insurer, New India Assurance Co. Ltd., as a Management Trainee, rising through the ranks with positions in both India and Fiji, including Branch Manager, Divisional Manager and Senior Divisional Manager. In this position he headed the Hull Divisional Office managing Oil & Energy and Shipping. Pradeep also worked in Tanzania holding a senior position for an Insurance Company.

Pradeep currently heads the Corporate Insurance Department of Larsen & Toubro Limited (L&T), one of the largest and most respected companies in India's private sector. L&T are a USD 12.8 billion conglomerate involved in Technology, Engineering, Construction (onshore, offshore, Shipbuilding and Ports), Manufacturing, Port Operations and Financial Services with increasing global operations.

Pradeep has handled offshore CAR policies on both sides of the fence, as both an insurer with New India and as a buyer at L&T (EPC contractor), thus bringing a unique insight into the topic of the contractor being a major stakeholder in the off-shore CAR policy.



Nigel Chapman (Clyde & Co.)

Nigel is a founding member of the Energy, Engineering, Marine & Construction Insurance Group at Clyde & Co. He joined the firm in 1978 and has been a Partner since 1983. A major part of his expertise involves advising insurers on coverage, liability and subrogation issues arising out of large engineering losses during both operation and construction, onshore and off. He has profiles in the major directories and is generally recognised as a market leader, particularly for energy work.

In the Energy Sector, Nigel conducts both general commercial/contractual litigation and arbitration as well as acting for insurers when a casualty occurs. His experience in the Energy Sector embraces both upstream: control of well, construction and operating, as well as downstream: petrochemicals, power generation and machinery breakdown, including business interruption.